

SERIES A24

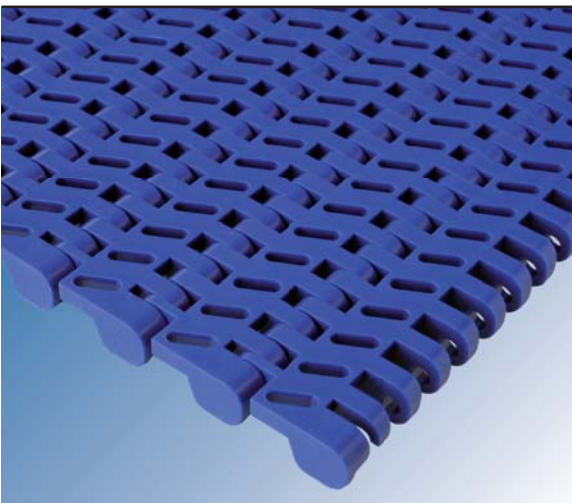
Easy-to-clean surfaces for light applications in food industry



FLAT TOP

The back side of the belt is completely smooth allowing an easy cleaning, so that water and wastes are conveyed to its open edges.

Material of the belt	Material of the rod	Belt strength (kg/m)	Temperature range °C	Belt weight (kg/m ²)
Polypropylene	Polypropylene	1,283	+1 to +104 °C	5.80
Polyethylene	Polyethylene	350	-50 to +65 °C	5.96
Polyacetal	Polypropylene	2,000	+1 to +90 °C	8.37
Polyacetal	Polyethylene	1,699	-40 to +65 °C	8.41



FLUSH GRID

Its oval perforations of 9.5 x 3 mm. provide a 30% open area. This surface is used when any liquid drainage or air passage through the belt is required.

Material of the belt	Material of the rod	Belt strength (kg/m)	Temperature range °C	Belt weight (kg/m ²)
Polypropylene	Polypropylene	753	+1 to +104 °C	4.90
Polyethylene	Polyethylene	260	-50 to +65 °C	5.12
Polyacetal	Polypropylene	1,850	+1 to +90 °C	7.10
Polyacetal	Polyethylene	1,414	-40 to +65 °C	7.14

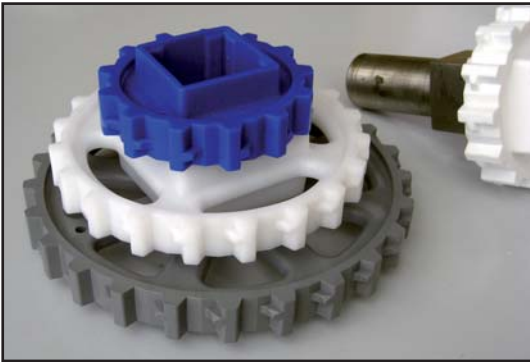


RAISED RIB

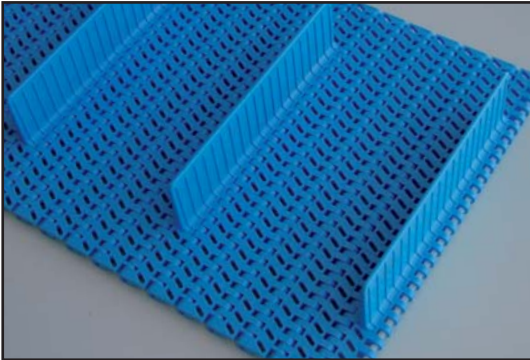
Its ribs are 6 mm high to lodge the finger plates making possible smooth right transfers without any overturning of product.

Material of the belt	Material of the rod	Belt strength (kg/m)	Temperature range °C	Belt weight (kg/m ²)
Polypropylene	Polypropylene	950	+1 to +104 °C	6.45
Polyacetal	Polypropylene	1,850	+1 to +90 °C	9.90
Acetal	Polyethylene	1,700	-40 to +65 °C	9.94

SERIES A24 - ACCESSORIES



Sprockets



Flights

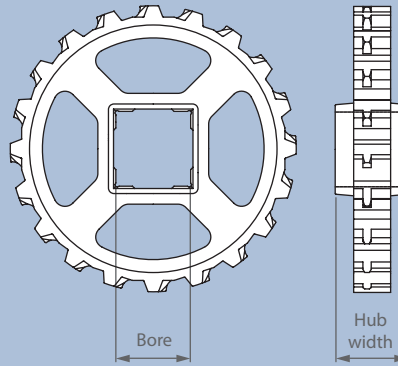


Flights and side guards



Finger plates

SPROCKETS

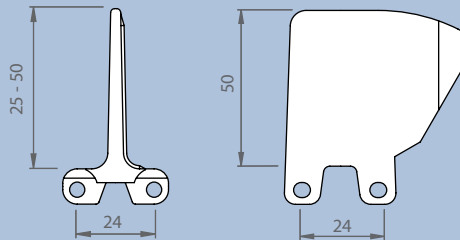


Eurobelt offers all sprockets in polypropylene and polyacetal.
Ask for round bore availability.
Maximum spacing between sprockets: 100 mm.

Teeth T	Pitch Ø	Bore (mm)	Bore (inch)	Hub width	A	B max.	C max.
7	55.31	20	-	20	22	25	55
13	100.28	40	1.5"	40	46	40	100
20	153.40	40/60	1.5"	40	72	50	155
25	191.48	40/60/90	1.5"	40	91	60	195

A: Distance between the sliding surface of the belt and the centre of the shaft.
B: Distance between the vertical of the shaft and the beginning of the sliding surface.
C: Distance between the sliding surface of the belt and the support of the return way.

FLIGHTS AND SIDE GUARDS



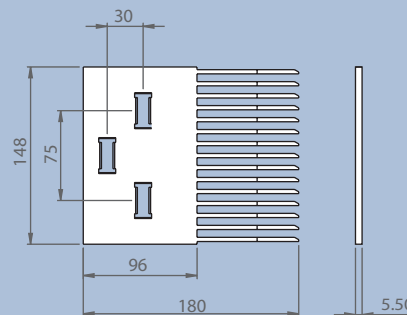
STREAMLINE - NO CLING

SIDE GUARDS

The distance between the side edges of the belt and the flights (indent) must be a multiple of 10 mm, being 20 mm the minimum.

The pitch of flights along the belt will be a multiple of 48 mm.

FINGER PLATES



The finger plates are manufactured in nylon and have 15 teeth.

They have three fastening holes that enable little displacements to achieve a better coupling with the belt.

The finger plates can be easily installed in the structure of the conveyor putting a screw in each hole.

DISTRIBUTOR:



AFHER EUROBELT S.A.

Topacio, 41 47012 - Valladolid (Spain)

Phone: +34 983 217 480 Fax: +34 983 217 481

e-mail: afher@eurobelt.com

web: www.eurobelt.com